

CTUIT RADAR

Find trends before they find you!

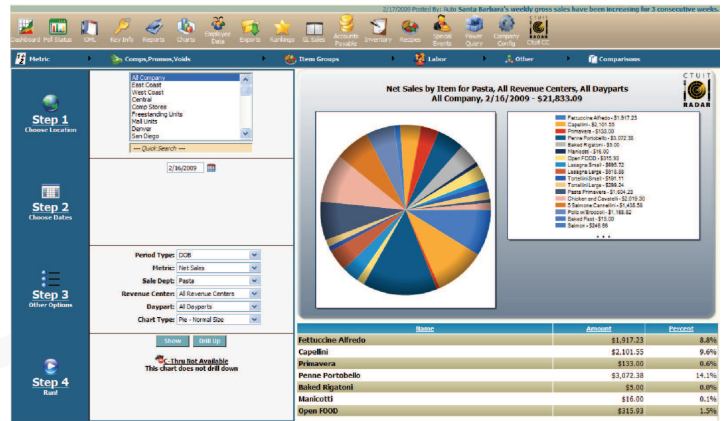
Ctuit provides a wide variety of web-based decision support tools to help multi and single unit restaurants manage operations & finance, prevent fraud, reduce administrative overhead, and more.



What We Do (continued)

Each evening, a push of raw information from the multiple point-of-sale (POS) systems uploads into a secure database at the CTUIT Radar secure data center. This information is viewable by management of all levels with heavy password protections using any Internet Explorer connection. Permissions-driven privileges restrict or direct lower-level management to pre-approved functions. With CTUIT Radar, you control who sees what.

One of the top (and most important) items you want to know is how much savings using CTUIT Radar will offer you. The reduction of manual labor entry is an obvious savings but the bulk of your return on investment is the business-saving practices you will implement knowing the entire corporate enterprise operational activity on a daily or hourly basis. By making decisions early enough to effect your period end numbers you can shave percentage points off labor and increase sales - which, as you know, will make a tremendous difference to your P&L. Many CTUIT Radar clients have experienced an ROI of 1000% or more!



Whether you're looking for transaction level detail, comparing geographic regions, reviewing server productivity or looking for trends- CTUIT Radar excels in providing reports, charts and graphs that eliminate the need to sift through pages of unwanted numbers to unearth what is important. If your company still manually generates spreadsheets, Access databases and emails reports to your management team, CTUIT Radar would like to extend an invitation to welcome you to a unique, low cost alternative that has quickly become the new standard.

3/4/2009 Posted By: Auto Weekly Maintenance Period

Dashboard | Pull Status | OMC | Key Info | Reports | Charts | Employee Data | Exports | Rankings | GE Sales | Accounts Payable | Inventory | Recipes | Events | Company Config

Key Info

Set Goals: Print Export to Excel

Location Group: All Show

Date: 3/2/2009

Week Period Quarter Year

Metric:

 Net Sales Labor \$ Guest Ct Comps GCs Sold

 Gross Sales Labor Hours Check Ct Check Avg Promo GCs Redeemed

 Labor % OT DT Hours Entree Ct Entree Avg Voids Avg Reg Rate

| Location | DOB | SDLW | SDLY | BDDB | WTD | LWTD | LYWTD | BWTD | PTD |
|--------------------|--------|--------|--------|-------|--------|--------|--------|-------|--------|
| All Company | 37.61% | 38.29% | 33.91% | 0.00% | 33.96% | 28.29% | 28.61% | 0.00% | 33.96% |
| East Coast | 37.83% | 37.23% | 33.23% | 0.00% | 33.78% | 28.35% | 28.19% | 0.00% | 33.78% |
| West Coast | 43.87% | 42.30% | 37.84% | 0.00% | 37.85% | 30.51% | LYWTD | | 37.85% |
| Central | 37.86% | 36.78% | 36.09% | 0.00% | 34.17% | 29.20% | | | 34.17% |
| Comp Stores | 36.18% | 37.06% | 33.69% | 0.00% | 33.51% | 27.89% | | | 33.51% |
| Freestanding Units | 39.10% | 39.67% | 34.66% | 0.00% | 34.81% | 28.41% | | | 34.81% |
| Hill Units | 36.47% | 37.19% | 33.34% | 0.00% | 33.27% | 28.19% | | | 33.27% |
| Denver | 34.74% | 32.49% | 30.19% | 0.00% | 31.52% | 27.98% | | | 31.52% |
| San Diego | 41.77% | 54.62% | 55.38% | 0.00% | 44.44% | 37.32% | 40.92% | 0.00% | 44.44% |

East Coast is UP compared to LYWTD
 Variance: 5.59%
 Variance %: 19.84%
 LYWTD: 03/03/08 to 03/04/08

Ctuit Software
 7 Commercial Blvd.
 Suite #6
 Novato, CA 94949
 415-884-4888
 fax 415-884-4889